

WINDEMERE POINTE

BEING A REPLAT OF A PORTION OF LOTS 12, 13 AND 14, BLOCK 2, SECTION 29, TOWNSHIP 37 SOUTH, RANGE 41 EAST, ST. LUCIE GARDENS SUBDIVISION, PLAT BOOK 1, PAGE 35, ST. LUCIE (NOW MARTIN) COUNTY, FLORIDA
SHEET 2 OF 2

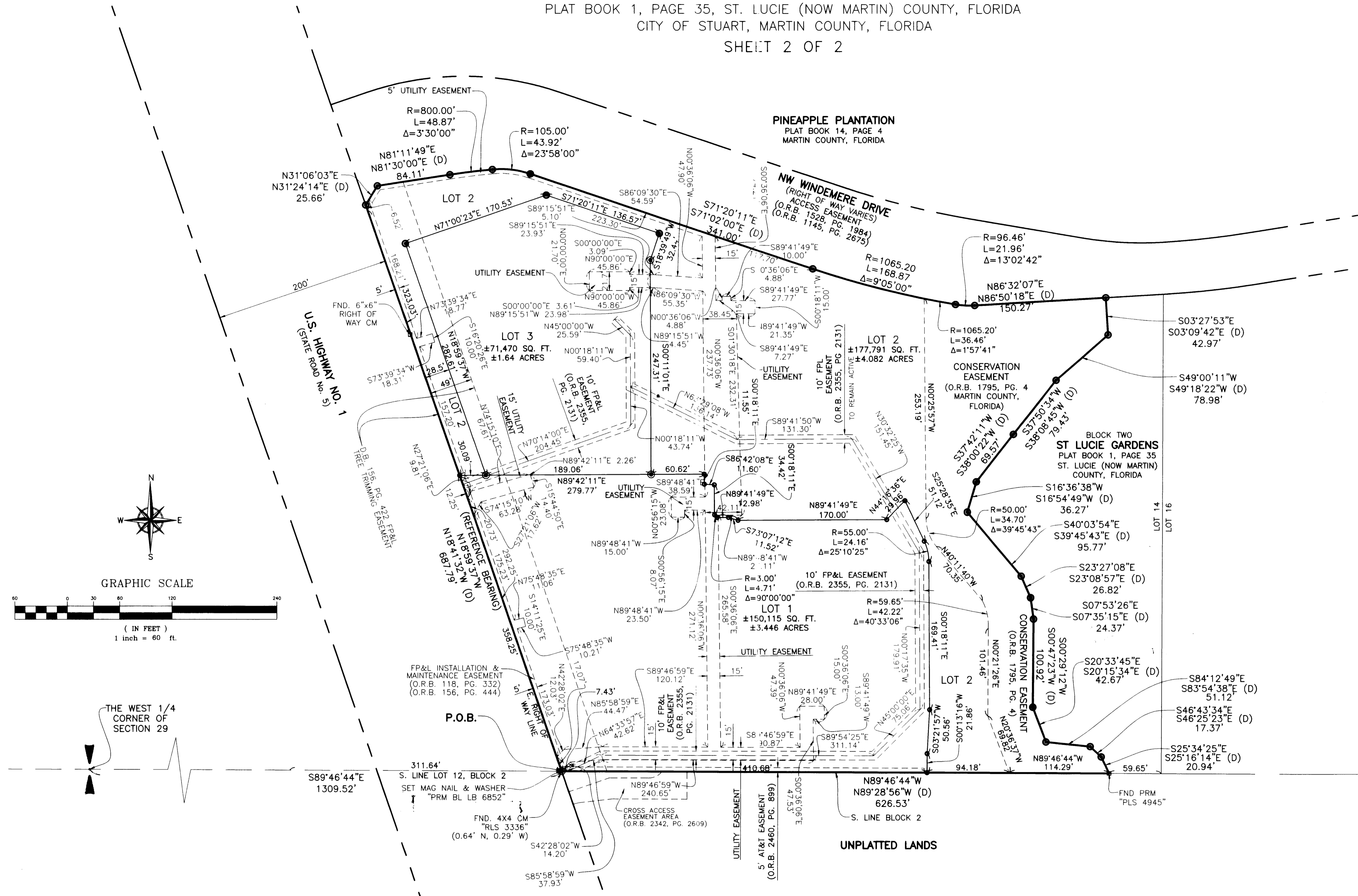
Plat BK 17 PG 22
Sheet 2 of 2

CLERK'S RECORDING CERTIFICATE

I, CAROLYN TIMMANN, CLERK OF THE CIRCUIT COURT OF MARTIN COUNTY, FLORIDA, HEREBY CERTIFY THAT THIS PLAT WAS FILED FOR RECORD IN PLAT BOOK _____ PAGE _____ MARTIN COUNTY, FLORIDA, PUBLIC RECORDS THIS _____ DAY OF _____, 2013
CAROLYN TIMMANN

CIRCUIT COURT
MARTIN COUNTY, FLORIDA
BY _____ DEPUTY CLERK
FILE NO. _____

PARCEL CONTROL NO.



NOTE:

ALL EASEMENTS THAT WERE CREATED BY SEPARATE INSTRUMENT AS ILLUSTRATED ON THIS PLAT ARE TO REMAIN ACTIVE.
THERE IS A CONSTRUCTION, OPERATION, AND RECIPROCAL EASEMENT AGREEMENT THAT AFFECTS LOTS 1, 2 AND 3 AS RECORDED IN OFFICIAL RECORDS BOOK 2380, AT PAGE 1487 OF THE PUBLIC RECORDS OF MARTIN COUNTY, FLORIDA, WHICH MAY BE MODIFIED, AMENDED OR REPLACED FROM TIME TO TIME.

GENERAL NOTES

- A. BEARINGS AS SHOWN HEREON ARE BASED ON STATE PLANE COORDINATES, NORTH AMERICAN DATUM 1983/1990 (NAD 83/90), REFERENCE A BEARING OF N18°59'37"W ALONG THE EAST RIGHT OF WAY LINE OF U.S. HIGHWAY NO. 1 (STATE ROAD NO. 5).
- B. THIS PLAT, AS RECORDED IN ITS ORIGINAL FORM IN THE PUBLIC RECORDS, IS THE OFFICIAL DEPICTION OF THE SUBDIVIDED LANDS DESCRIBED HEREON AND WILL IN NO CIRCUMSTANCES BE SUPPLEMENTED IN AUTHORITY BY ANY OTHER FORM OF THE PLAT, WHETHER GRAPHIC OR DIGITAL.
- C. NOTICE: THERE MAY BE ADDITIONAL RESTRICTIONS THAT ARE NOT RECORDED ON THIS PLAT THAT MAY BE FOUND IN THE PUBLIC RECORDS OF THIS COUNTY.

LEGEND

- AT&T INDICATES AMERICAN TELEPHONE & TELEGRAPH COMPANY
- BL INDICATES BETSY LINDSAY, INC.
- BLI INDICATES BETSY LINDSAY, INC.
- CM INDICATES CONCRETE MONUMENT
- (D) INDICATES PER DEED
- D.B. INDICATES DEED BOOK
- FND. INDICATES FOUND
- FP&L INDICATES FLORIDA POWER & LIGHT COMPANY
- IR&C INDICATES IRON ROD & CAP
- L INDICATES LENGTH OF ARC
- LB INDICATES LICENSED BUSINESS
- NAD INDICATES NORTH AMERICAN DATUM
- O.R.B. INDICATES OFFICIAL RECORDS BOOK
- P.B. INDICATES PLAT BOOK
- P.G. INDICATES PAGE
- P.O.B. INDICATES POINT OF BEGINNING
- P.O.C. INDICATES POINT OF COMMENCEMENT
- R INDICATES RADIUS
- SQ. FT. INDICATES SQUARE FEET
- U.E. INDICATES UTILITY EASEMENT
- PRM INDICATES PERMANENT REFERENCE MONUMENT
- Δ INDICATES DELTA (CENTRAL) ANGLE
- INDICATES SET 5/8" IRON ROD & CAP STAMPED "BL LB 6852"
- INDICATES SET 5/8" IRON ROD & CAP STAMPED "PRM BL LB 6852" [PERMANENT REFERENCE MONUMENT]
- ⊙ INDICATES SET MAG NAIL & DISK STAMPED "PRM BL LB 6852" [PERMANENT REFERENCE MONUMENT]

SEAL SEAL SEAL

B BETSY LINDSAY, INC.
SURVEYING AND MAPPING
7997 S.W. JACK JAMES DRIVE STUART, FLORIDA 34997
(772)286-5753 (772)286-5933 FAX
LICENSED BUSINESS NO. 6852
WINDEMERE POINTE SHEET 2 OF 2